

Royal Cape Performance Circuit – Cape 31

SUPPLEMENTARY SAILING INSTRUCTIONS

Version 1.1

NoR 1 & 7 has been added, NoR 3(SIGNALS MADE ASHORE) has been deleted, highlighted in yellow, 19 February 2025

The sailing instructions will consist of the Standard Sailing Instructions (SSI) in RRS Appendix S and these supplementary sailing instructions for the below events:

Event 1: Royal Cape Performance Circuit Event #1, 19 - 20 October 2024, Royal Cape Yacht Club, Cape Town

Event 2: Royal Cape Performance Circuit Event #2, 16 - 17 November 2024, Royal Cape Yacht Club, Cape Town

Event 5: Royal Cape Performance Circuit Race Day #1, 8 February 2025, Royal Cape Yacht Club, Cape Town

Event 8: Yacht Port Event, 7 - 8 March 2025, Yacht Port, Saldana

Organizing Authority: Cape 31 Class Association with the approval of South African Sailing (RRS89.1(e))

1. RULES

- a. SSI 4 (SIGNALS MADE ASHORE) has been deleted.
- b. SSI 13 (PROTESTS AND REQUESTS FOR REDRESS) has been deleted.

2. SHORTENING COURSE

- a. In addition to the provisions of RRS 32, the race committee may also signal a shortened course before the first boat reaches a gate or rounding mark by displaying flag F with repeated sounds. On this signal boats shall pass through the gate or round the mark as required to sail the course, and thereafter proceed directly to the finishing line. This signal shall continue to be made until all boats still racing have passed these marks. This changes RRS 32.

3. MARKS

Windward mark (1)	Red cylindrical buoy
Spreader mark (1a)	Red cylindrical buoy
Gate marks (2s & 2p)	Yellow cylindrical buoys
Centre mark (r)	Orange cylindrical buoy
Starting/finishing pin	Orange spherical buoy
Race committee vessel	

4. CHANGE OF THE NEXT LEG OF THE COURSE

- a. RRS App S 10.1 is deleted and replaced by: To change the next leg of the course, the race committee will move the original mark (or the finish line) to a new position. If Mark 1 is moved during a race, Mark1a is no longer a mark of the course.

5. TIME LIMITS

- a. Mark 1 Time Limit: 20 min
Race Time Limit: 60 min
Finishing Window: 10 min

6. RADIO COMMUNICATION

- a. All boats are required to keep a listening watch on the designated VHF channel from 30 minutes before the first scheduled race of the day until they have left the racing area after racing.
- b. The Race Committee may communicate, over the designated VHF channel, changes to Sailing Instructions, boats called OCS, and other information before and during racing. Failure to hear this communication will not be grounds for a request for redress. This changes RRS 60.1(b).

7. HEARING REQUESTS

- a. Hearing requests may be delivered by sending them by email to protest@cape31.com or, by submitting them online at [Hearing Request Form](#). Submissions via either option above will be considered as being delivered to the Race Office.
- b. The protest time limit for each class is 90 minutes after the last boat has finished the last race of the day or the race committee signals no more racing today, whichever is later.
- c. Notices will be posted no later than 30 minutes after the protest time limit to inform competitors of hearings in which they are parties, and where the hearings will be held.

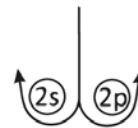
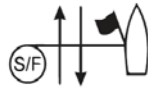
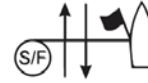
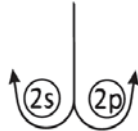
COURSE DIAGRAMS

The courses in the SSI are replaced by the courses below:


Course L




Course LM



Signal

Mark Rounding Order

L2 | LM2

S - 1 - 2s/p - 1 - F

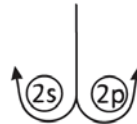
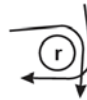
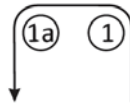
L3 | LM3

S - 1 - 2s/p - 1 - 2s/p - 1 - F

L4 | LM4

S - 1 - 2s/p - 1 - 2s/p - 1 - 2s/p - 1 - F


Course R



Signal

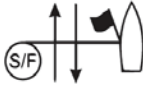
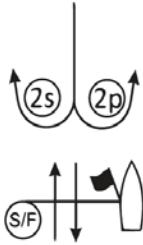
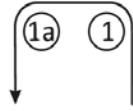
Mark Rounding Order

R1 S - r - 2s/p - 1 - 1a - r - F

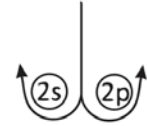
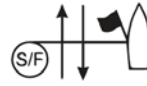
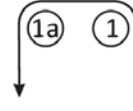
R2 S - r - 2s/p - 1 - 1a - 2s/p - 1 - 1a - r - F

R3 S - r - 2s/p - 1 - 1a - 2s/p - 1 - 1a - 2s/p - 1 - 1a - r - F

C₃₁
Course LA



C₃₁
Course LAM



Signal	Mark Rounding Order
LA2 LAM2	S - 1 - 1a - 2s/p - 1 - 1a - F
LA3 LAM3	S - 1 - 1a - 2s/p - 1 - 1a - 2s/p - 1 - 1a - F
LA4 LAM4	S - 1 - 1a - 2s/p - 1 - 1a - 2s/p - 1 - 1a - 2s/p - 1 - 1a - F