

Cape Performance Cup

30 November – 1 December 2024

Royal Cape Yacht Club, Cape Town

Organizing Authority: Cape 31 Class Association with the approval of South African Sailing
(RRS89.1(e))

SUPPLEMENTARY SAILING INSTRUCTIONS

The sailing instructions will consist of the Standard Sailing Instructions (SSI) in RRS Appendix S and these supplementary sailing instructions:

1. SHORTENING COURSE

- a. In addition to the provisions of RRS 32, the race committee may also signal a shortened course before the first boat reaches a gate or rounding mark by displaying flag F with repeated sounds. On this signal boats shall pass through the gate or round the mark as required to sail the course, and thereafter proceed directly to the finishing line. This signal shall continue to be made until all boats still racing have passed these marks. This changes RRS 32.

2. SIGNALS MADE ASHORE

- a. Signals made ashore will be transmitted via the Cape 31 SA | Race Office [WhatsApp Group](#).

3. MARKS

Windward mark (1)	Red cylindrical buoy
Spreader mark (1a)	Red cylindrical buoy
Gate marks (2s & 2p)	Yellow cylindrical buoys
Centre mark (r)	Orange cylindrical buoy
Starting/finishing pin	Pink spherical buoy
Race committee vessel	

4. CHANGE OF THE NEXT LEG OF THE COURSE

- a. RRS App S 10.1 is deleted and replaced by: To change the next leg of the course, the race committee will move the original mark (or the finish line) to a new position. If Mark 1 is moved during a race, Mark1a is no longer a mark of the course.

5. TIME LIMITS

- a. Mark 1 Time Limit: 20 min
Race Time Limit: 60 min
Finishing Window: 10 min

6. RADIO COMMUNICATION

- a. All boats are required to keep a listening watch on the designated VHF channel from 30 minutes before the first scheduled race of the day until they have left the racing area after racing.
- b. The Race Committee may communicate, over the designated VHF channel, changes to Sailing Instructions, boats called OCS, and other information before and during racing. Failure to hear this communication will not be grounds for a request for redress. This changes RRS 60.1 (b).

7. PROTEST AND REQUESTS FOR REDRESS

- a. Appendix S 13.1 is deleted and replaced with:

Hearing requests shall be submitted online at [Hearing Request Form](#). Submissions via the above link will be considered as delivered to the Race Office.

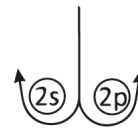
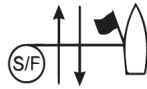
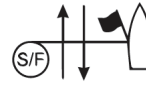
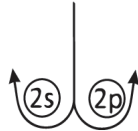
COURSE DIAGRAMS

The courses in the SSI are replaced by the courses below:


Course L




Course LM



Signal

Mark Rounding Order

L2 | LM2

S - 1 - 2s/p - 1 - F

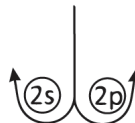
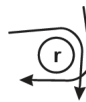
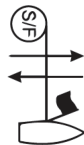
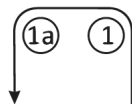
L3 | LM3

S - 1 - 2s/p - 1 - 2s/p - 1 - F

L4 | LM4

S - 1 - 2s/p - 1 - 2s/p - 1 - 2s/p - 1 - F

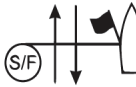
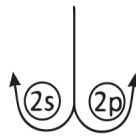
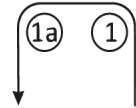

Course R



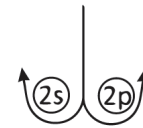
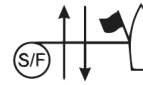
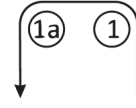
Signal Mark Rounding Order

R1 S - r - 2s/p - 1 - 1a - r - F
 R2 S - r - 2s/p - 1 - 1a - 2s/p - 1 - 1a - r - F
 R3 S - r - 2s/p - 1 - 1a - 2s/p - 1 - 1a - 2s/p - 1 - 1a - r - F


 Course LA




 Course LAM



Signal Mark Rounding Order

LA2 | LAM2 S - 1 - 1a - 2s/p - 1 - 1a - F
 LA3 | LAM3 S - 1 - 1a - 2s/p - 1 - 1a - 2s/p - 1 - 1a - F
 LA4 | LAM4 S - 1 - 1a - 2s/p - 1 - 1a - 2s/p - 1 - 1a - 2s/p - 1 - 1a - F