

2022 CAPE 31 End of SEASON Regatta

SUPPLEMENTARY SAILING INSTRUCTIONS

incorporating the



Organizing Authority: Cape 31 Class Association with the approval of South African Sailing (RRS89.1(e))

The sailing instructions will consist of the instructions in RRS Appendix S, Standard Sailing Instructions (SSI) and these supplementary sailing instructions:

- 1 NOTICES TO COMPETITORS
 - a. The Official Notice Board will be the Cape 31 Online Notice Board.

- 2 RULES
 - ~~a. In RRS 29 & 30, the words "no part of a boat's hull, crew or equipment" are replaced with "no part of a boat's hull, crew or equipment excluding the bowsprit and equipment forward of the hull stem".~~
 - b. In addition to the provisions of RRS 32, the race committee may also signal a shortened course before the first boat reaches a gate or rounding mark by displaying flag F with repeated sounds. On this signal boats shall pass through the gate or round the mark as required to sail the course, and thereafter proceed directly to the finishing line. This signal shall continue to be made until all boats still racing have passed these marks. This changes RRS 32.

- 3 SIGNALS MADE ASHORE
 - a. Signals made ashore will be transmitted on the Cape31 | Race Office Whatsapp group.

- 4 SCHEDULE
 - a. Racing will take place on the following days:

Event	Date
C31 End of Season Regatta	May 14 May 15

- b. The Start signal for the first race on each day will not be before 12h00.
- ~~c. A maximum of 6 races with a target time of 45 minutes are scheduled.~~
- ~~d. No warning signal shall be made after 17h00.~~



5 LIST OF MARKS

Mark

Cylinder Red,
Cylinder Red,
Cylinder Yellow,
Cylinder Yellow,
Spherical Pink,
Cylinder Orange, Scud Racing
Committee Boat

Designation

Weather Mark (1)
Offset Mark (1a)
Leeward Gate (2s)
Leeward Gate (2p)
Center Mark (r)
Start Pin
Start Boat

6 CHANGE OF THE NEXT LEG OF THE COURSE

- a. RRS App S 10.1 is deleted and replaced by: To change the next leg of the course, the race committee will move the original mark (or the finish line) to a new position. If Mark 1 is moved during a race, Mark 1a is no longer a mark of the course.

7 TIME LIMITS

Mark 1 Time Limit: 20 min
Race Time Limit: 60 min
Finishing Window: 10 min

8 COURSE DIAGRAMS

The courses in the SSI are replaced by the courses below:

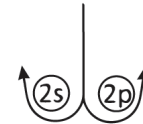
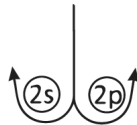
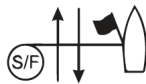
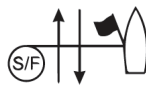
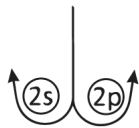
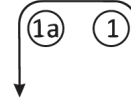

Course L




Course LM




Course R



Signal

Mark Rounding Order

L2 | LM2
L3 | LM3
L4 | LM4

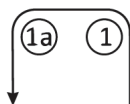
S - 1 - 2s/p - 1 - F
S - 1 - 2s/p - 1 - 2s/p - 1 - F
S - 1 - 2s/p - 1 - 2s/p - 1 - 2s/p - 1 - F

Signal

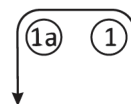
Mark Rounding Order

R1 | S - r - 2s/p - 1 - 1a - r - F
R2 | S - r - 2s/p - 1 - 1a - 2s/p - 1 - 1a - r - F
R3 | S - r - 2s/p - 1 - 1a - 2s/p - 1 - 1a - 2s/p - 1 - 1a - r - F


Course LA




Course LAM



Signal

Mark Rounding Order

LA2 | LAM2
LA3 | LAM3
LA4 | LAM4

S - 1 - 1a - 2s/p - 1 - 1a - F
S - 1 - 1a - 2s/p - 1 - 1a - 2s/p - 1 - 1a - F
S - 1 - 1a - 2s/p - 1 - 1a - 2s/p - 1 - 1a - 2s/p - 1 - 1a - F