



2022 CAPE 31 SEASON

SUPPLEMENTARY SAILING INSTRUCTIONS

Organizing Authority: Cape 31 Class Association with the approval of South African Sailing (RRS89.1(e))



The sailing instructions will consist of the instructions in RRS Appendix S, Standard Sailing Instructions (SSI) and these supplementary sailing instructions:

- 1 NOTICES TO COMPETITORS
 - a. The Official Notice Board will be the Cape 31 Online Notice Board.

- 2 RULES
 - a. In addition to the provisions of RRS 32, the race committee may also signal a shortened course before the first boat reaches a gate or rounding mark by displaying flag F with repeated sounds. On this signal boats shall pass through the gate or round the mark as required to sail the course, and thereafter proceed directly to the finishing line. This signal shall continue to be made until all boats still racing have passed these marks. This changes RRS 32.

- 3 SIGNALS MADE ASHORE
 - a. Signals made ashore will be transmitted on the Cape31 | Race Office Whatsapp group.

- 4 SCHEDULE
 - a. Racing will take place on the following days:

Event	Date
C31 Winter Series Race Days	October 2
	October 23
	October 30 (Backup Day)
	November 13
	November 20 (Backup Day)
C31 Summer Series Race Days	December 11
	January 22
	February 26
	March 12
	April 9
	April 23 (Backup Day)

- b. The Start signal for the first race on each day will not be before 12h00.
- c. 3 Races with a target time of 45 minutes are scheduled to take place each day.
- d. No Starting signal shall be made after 16h00 on any day of racing.

5 LIST OF MARKS

Mark	Designation
Cylinder Red,	Weather Mark (1)
Cylinder Red,	Offset Mark (1a)
Cylinder Yellow,	Leeward Gate (2s)
Cylinder Yellow,	Leeward Gate (2p)
Spherical Pink,	Centre Mark (r)
Cylinder Orange, Scud Racing	Start Pin
Committee Boat	Start Boat

6 CHANGE OF THE NEXT LEG OF THE COURSE

- a. RRS App S 10.1 is deleted and replaced by: To change the next leg of the course, the race committee will move the original mark (or the finish line) to a new position. If Mark 1 is moved during a race, Mark 1a is no longer a mark of the course.

7 TIME LIMITS

- Mark 1 Time Limit: 20 min
- Race Time Limit: 60 min
- Finishing Window: 10 min

8 COURSE DIAGRAMS

The courses in the SSI are replaced by the courses below:

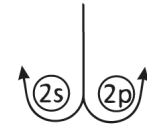
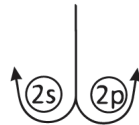
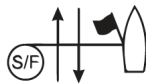
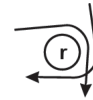
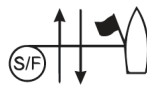
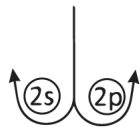
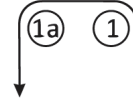

Course L




Course LM




Course R



Signal

Mark Rounding Order

L2 | LM2
L3 | LM3
L4 | LM4

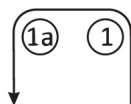
S - 1 - 2s/p - 1 - F
S - 1 - 2s/p - 1 - 2s/p - 1 - F
S - 1 - 2s/p - 1 - 2s/p - 1 - 2s/p - 1 - F

Signal

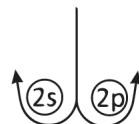
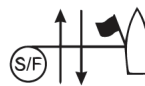
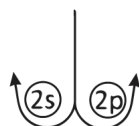
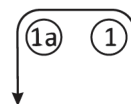
Mark Rounding Order

R1 S - r - 2s/p - 1 - 1a - r - F
R2 S - r - 2s/p - 1 - 1a - 2s/p - 1 - 1a - r - F
R3 S - r - 2s/p - 1 - 1a - 2s/p - 1 - 1a - 2s/p - 1 - 1a - r - F


Course LA




Course LAM



Signal Mark Rounding Order

LA2 | LAM2 S - 1 - 1a - 2s/p - 1 - 1a - F
LA3 | LAM3 S - 1 - 1a - 2s/p - 1 - 1a - 2s/p - 1 - 1a - F
LA4 | LAM4 S - 1 - 1a - 2s/p - 1 - 1a - 2s/p - 1 - 1a - 2s/p - 1 - 1a - F